



Reticular pigmentation and equatorial drusen

Honeycomb degeneration

DESCRIPTION

Reticular pigmentation and equatorial drusen are age-related, benign, peripheral retinal degenerations that are frequently seen together and have no association with retinal breaks or detachment. They are usually bilateral.

While similar in appearance, equatorial drusen are not associated with the drusen that may be seen elsewhere in the fundus, such as at the macula and within the optic nerve head.

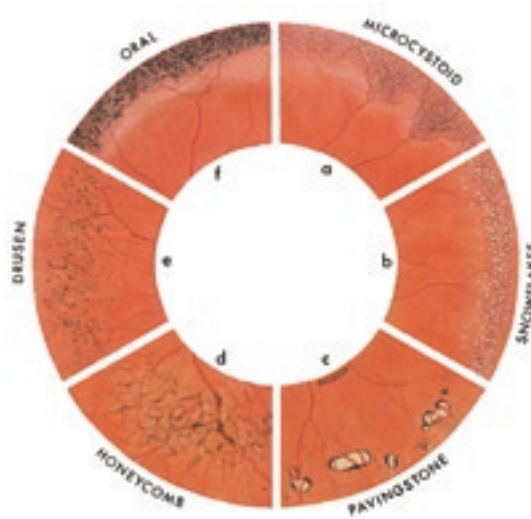
SYMPTOMS

Both conditions are asymptomatic.

SIGNS

Reticular pigmentation typically appears as irregular fishnet-like areas of hyperpigmentation in the mid-peripheral and equatorial regions of the fundus. They may assume a honeycomb pattern. The reticular configuration becomes more obvious over time. Clumps of pigment may also gather along the vessel walls.

Equatorial drusen are small, yellow and discrete, often with a surrounding cuff of pigment. These changes have been reported as being more readily observed in the nasal quadrants on the fundus.



Reticular pigmentation (Honeycomb degeneration) and equatorial drusen. Some other benign peripheral retinal degenerations are also shown. Figure courtesy of Kanski JJ. *Clinical Ophthalmology* 4th edition, Butterworth-Heinemann

The full series of these articles is available in the book *Posterior Eye Disease and Glaucoma A-Z* by Bruce AS, O'Day J, McKay D and Swann P. £39.99. For further information click on the Bookstore at opticianonline.net

PREVALENCE

They are common in the older age groups.

DIFFERENTIAL DIAGNOSIS

Retinitis pigmentosa; Lattice degeneration.

MANAGEMENT

No treatment is required for these conditions.

- **Adrian Bruce** is a Chief Optometrist at the Victorian College of Optometry and a Senior Fellow, Department of Optometry and Vision Sciences, The University of Melbourne.
- **Justin O'Day** is an Associate Professor in the Department of Ophthalmology, The University of Melbourne and Head Of Neuro-Ophthalmology Clinic, Royal Victorian Eye and Ear Hospital.
- **Daniel McKay** is a Medical Officer at the Royal Victorian Eye & Ear Hospital.
- **Peter Swann** is Associate Professor in the School of Optometry, Queensland University of Technology.



Altomed are specialist suppliers of ophthalmic surgical instrumentation and diagnostic tools to hospitals and eye care professionals. Take advantage of our expertise and friendly service, next time you have a requirement.

tel: 0191 5190111 email: sales@altomed.com

www.altomed.com
www.optic-online.co.uk
www.microwash.co.uk



ALTOMED

Altomed Ltd 2 Witney Way Boldon
 Business Park Tyne & Wear
 NE26 9PE England