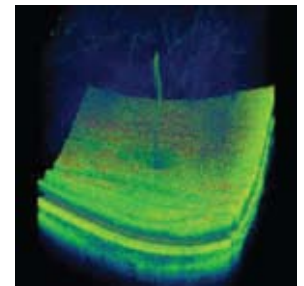
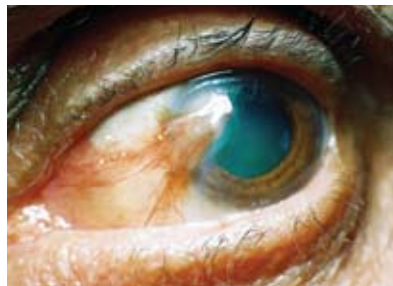


Win the new Henson!

This year, *Optician* teams up with Topcon for our photography competition which offers the best prizes yet



Another year, another photography competition. But this year there is a difference. *Optician* has teamed up with a new sponsor, revised the various entry categories, and can offer prizes of a value in excess of £10,000. We are also expanding the entry requirements this year so as well as accepting entries using a variety of fundus imaging systems, including OCTs, SLOs, Optomap and so on, we also include a category for anterior imaging to encourage all of you with a slit lamp camera to enter. As usual, we have assembled a panel of experienced clinicians and medical photographers to judge your entries and they look forward to the usual excellent contributions.

Unusual condition

£250-worth of photographic and other hi-tech goodies will be on offer for the entrant judged to have captured the condition considered to be the most unusual. In the past this has attracted a range of conditions that any ophthalmology textbook would be proud of. It may be a rare condition or perhaps an unusual appearance or presentation of a common condition.

Photographic skills

£250-worth of photographic and other hi-tech goodies will be on offer for the entrant judged to have used the most skill in capturing an image. This may be a far peripheral shot, an adapted image using software, an image taken from a child or neonate, a shot through a gonio lens, or anything that our judges feel takes a degree of skill to get right. Show off your skills.

Anterior image

This year we open the competition to entries of anterior or external structures or lesions, so if you have a camera slit lamp now is the time to show off how you use it. We have a Topcon LM8 Lensmeter available as a prize.

Overall winner

This autumn sees the launch of the much anticipated Henson automated visual field screener and we are happy

to announce that one will be available as a prize to the entrant our judges decide has impressed the most overall.

Judging panel

As ever, we are happy to have a panel comprising Professor James Wolfssohn of Aston University and Ann Bolton, head of photography at the Oxford Radcliffe Hospital, along with clinical editor of *Optician* Bill Harvey and medical photographer and Topcon representative Ben Turley. ●

HOW TO ENTER

There are two ways to submit your images this year:

Email images to william.harvey@rbi.co.uk or on a CD-Rom by post to; *Optician*/Topcon Photographic Competition, Quadrant House, The Quadrant, Sutton, Surrey, SM2 5AS

- The decision of the judging panel is final
- There is no limit to the number of entries any individual may submit and each will be considered on its own merit
- Closing date for submission will be January 31 2011.
- Entries may be re-used by *Optician* or Topcon for education or marketing purposes
- Any image of the fundus or posterior chamber will be considered whether taken with digital retinal camera, mydriatic or non-mydriatic, analogue, scanning laser, OCT or tomograph
- Anterior images will be allowed this year

Alternatively:

- Go to www.opticianonline.net/opticianspace where you can register and log on and then follow the galleries link (note: your log-in details are the same as for CET)
- Here you will have the opportunity to add any comment or clinical data or information as required (for example in the submissions for the anterior image category)
- View other images here by simply clicking on their thumbnails
- It is essential that, when submitting to a public forum such as this, no sensitive clinical information be uploaded which might breach patient confidentiality. IT IS ESSENTIAL THAT WHERE A PATIENT MAY BE IDENTIFIED SUCH AS WITH SOME ANTERIOR IMAGES, WRITTEN PERMISSION IS HELD BY THE PRACTITIONER FOR THE IMAGE TO BE PUBLISHED. Images should not be recognisable to any individual and personal data must be made anonymous. *Optician* reserves the right to police the site and remove material felt to breach ethical and confidentiality guidelines