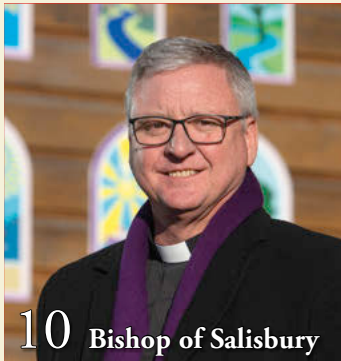


# CONTENTS

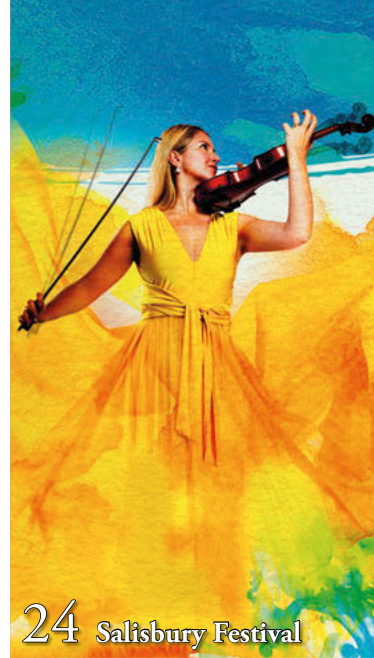
June 2022



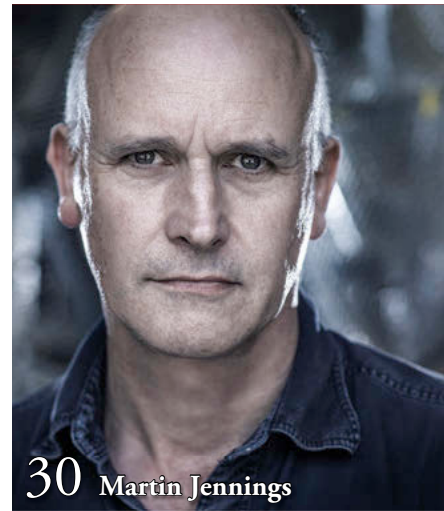
10 Bishop of Salisbury



20 Chalke Valley History Fest



24 Salisbury Festival



30 Martin Jennings



38 Salisbury Cathedral



42 County celebrations



52 Whitehall Vineyard

## Staff

Editor-in-Chief/Publisher: Mark Allen

Editor: Georgie Green

01722 717025

editor-wl@markallengroup.com

Publishing Director: Jane Kennedy

01722 717018

jane.kennedy@markallengroup.com

Circulation Director: Sally Boettcher

sally.boettcher@markallengroup.com

Subscription Manager: Bethany Foy

Page Design: Mary Holmes

Advert Design: Dan Bevan

Production Manager: Carolyn Allen

Production Director: Richard Hamshere

Managing Director: Paul Geoghegan

Chief Executive Officer: Ben Allen

## Contributors

Grant Berry, Sophie Butcher, Simon Heptinstall, Anne Holland, Gary Lawrence, Mary-Vere Parr, Clarissa Reilly

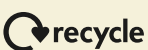
## MA Music Leisure & Travel

Part of

Mark Allen

www.markallengroup.com

Wiltshire Life is published by MA Music Leisure & Travel Ltd, Unit A Buildings 1-5, Dinton Business Park, Catherine Ford Rd, Dinton, Salisbury, Wiltshire SP3 5HZ  
www.wiltshirelife.co.uk



When you have finished with this magazine please recycle it.

ISSN: 1358-0582  
Printed by: Pensord Press Ltd, Blackwood, NP12 2YA

## FEATURES

### My Wiltshire: Major General (Ret'd) Tim Hyams CB OBE

The chief executive of ABF The Soldiers' Charity reflects on his life in the county

8

### In conversation with The Very Reverend Stephen Lake

Gary Lawrence meets the 79th Bishop of Salisbury

10

### In conversation with Lady Fiona Lansdowne

Mary-Vere Parr talks to Fiona Shelburne as she becomes the new High Sheriff

14

### Broad Chalke Gardens

Six beautiful gardens open to raise funds for refugees.

18

### Chalke Valley History Festival

Bringing the past alive at one of the county's most popular festivals.

20

### Salisbury International Arts Festival

Music, dance and drama set to fill the streets and spaces in the city and beyond

24

### Iford Manor Jazz Festival

International and up-and-coming artists prepare to entertain in the idyllic grounds

28

### Art: Martin Jennings

Discover more about this acclaimed sculptor's work at Arundells in Salisbury

30

### Mystical Wiltshire

Simon Heptinstall finds wise woman Eva May Nicot in good spirits

36

## QUEEN'S PLATINUM JUBILEE

### Salisbury Cathedral

Looking back at past royal visits and how the cathedral hosts these occasions

39

### 70 years of celebrations

From the coronation to jubilees – how the county commemorates our Queen

42

### Arts Funding

Communities across the county receive funding to create events and artwork

46

### Product guide

Treats and ideas from local producers perfect for a party or celebration

47

### Jubilee Quiz

Test your knowledge to see if you are an ardent follower of the monarchy

51

### Whitehall Farm and Vineyard

Discovering how farms and estates are adapting through the generations

52

### Issues that Matter

The Rosebud Foundation, a charity created through loss to help support others

56

## REGULARS

Moonraker	4
Around the County	6
Food and drink	48
Gardening for bees	64
Antiques	66

## SUBSCRIPTIONS

### UK Personal rates (print)

Quarterly Direct Debit	£15.50
Annual Direct Debit	£61.00
Annual Credit Card	£64.00
2yr Annual Credit Card	£108.80
3yr Annual Credit Card	£144.00

Subscribe online:  
www.magsubscriptions.com  
Subscribe by phone:  
+44 (0) 1722 716997

© MA Music Leisure & Travel Ltd, 2022. All rights reserved. No part of *Wiltshire Life* may be reproduced, stored in a retrieval system, or transmitted in any form or by any means electronic, mechanical, photocopying, recording, or otherwise without prior written permission of the Publishing Director.

The views expressed do not necessarily represent those of the editor or *Wiltshire Life*. Advertisements in the journal do not imply endorsement of the products or services advertised.

Please read our privacy policy, by visiting <http://privacypolicy.markallengroup.com>. This will explain how we process, use & safeguard your data

Cover: HM Queen Elizabeth II  
Illustration: Mary Holmes