

CONTENTS

November 2023 

Editor-in-Chief/Publisher
Mark Allen

Editor
Georgie Green
01722 717025
editor-wl@markallengroup.com

Publishing Director
Jane Kennedy
01722 717018
jane.kennedy@markallengroup.com

Circulation Director
Sally Boettcher
sally.boettcher@markallengroup.com

Subscription Manager
Bethany Foy

Page Design
Laura Tallon

Advert Design
Dan Bevan

Production Manager
Carolyn Allen

Production Director
Richard Hamshere

Managing Director
Paul Geoghegan

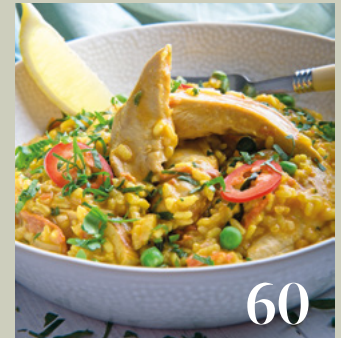
Chief Executive Officer
Ben Allen

Contributors
**Grant Berry, Sophie Butcher,
Gary Lawrence, Mary-Vere Parr**

Features



Regulars



04 | MOONRAKER

06 | AROUND THE COUNTY

08 | CALENDAR

60 | FOOD AND DRINK

64 | THE GARDENING YEAR

66 | RECOMMENDED READS

SUBSCRIPTIONS

UK Personal rates (print)

Quarterly Direct Debit £15.50
Annual Direct Debit £61.00
Annual Credit Card £64.00
2yr Annual Credit Card £108.80
3yr Annual Credit Card £144.00

Subscribe online:
www.magsubscriptions.com

Subscribe by phone:
+44 (0) 1722 716997

MA Music Leisure & Travel

PART OF

Mark Allen

www.markallengroup.com

Wiltshire Life is published by
MA Music Leisure & Travel Ltd,
Unit A Buildings 1-5,
Dinton Business Park,
Catherine Ford Rd, Dinton,
Salisbury, Wiltshire SP3 5HZ
www.wiltshirelife.co.uk



When you have finished with
this magazine please recycle it.

ISSN: 1358-0582

PRINTED BY:
PENSORD PRESS LTD,
DOWLAIS, CF48 3TD

12 Wiltshire Scene: Royal visit

*The Duchess of Edinburgh visits
Salisbury, Shrewton and Downton*

16 My Wiltshire: Quentin Goggs

*On retirement this former accountant
uses his life skills to support others*

18 In conversation with: Lisa Lloyd

*The Antiques Roadshow expert who is
drawn to the curious and collectable*

22 Art: Hannah Fowler

*This popular artist with a talent for
painting all creatures great and small*

26 Stonehenge: Flower power

*The stone circle sees the revival of a
spectacular Victorian dahlia festival*

30 Issue that matter: Wiltshire Search & Rescue

*The county volunteers supporting our
emergency services 24/7*

33 Remembrance: Bulford Kiwi

*Soldiers and civilians re-chalk this
landmark WWI antipodean bird*

36 Remembrance: SSAFA the armed forces charity

*You don't need a military background to
support the armed forces community*

39 Remembrance: Korean War

*Why it is important to remember the
'Forgotten War' of the 1950s*

40 Remembrance: Lydiard Park's POWs

*Uncovering the story behind the unlikely
base for a German military hospital*

42 Winter Walk: Calstone & Cherhill Down

*Take in ancient landscapes and rolling
downland on this National Trust trail*

44 Conservation: Salisbury Cathedral

*See the spire in all its glory as two
decades of scaffolding comes down*

48 History: Wallin Sisters

*An actress and a bone cracker the
curious tale of two Hindon sisters*

52 Conservation: Save our Chalk Streams

*How you can help Wiltshire Wildlife
Trust protect our streams and rivers*

56 Women in business: Sam Rosen-Nash

*Tisbury's culinary wizard with a passion
for sourcing food from field to fork*

© MA Music Leisure & Travel Ltd, 2023. All rights reserved. No part of *Wiltshire Life* may be reproduced, stored in a retrieval system, or transmitted in any form or by any means electronic, mechanical, photocopying, recording, or otherwise without prior written permission of the Publishing Director. The views expressed do not necessarily represent those of the editor or *Wiltshire Life*. Advertisements in the journal do not imply endorsement of the products or services advertised. Please read our privacy policy, by visiting <http://privacypolicy.markallengroup.com>. This will explain how we process, use & safeguard your data