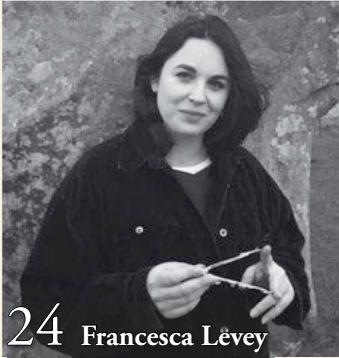


# CONTENTS

October 2021

PAULA MOORE



24 Francesca Lévey



32 SANDS football team



36 Top film locations



40 Marlborough cinema



45 Celebrating 75 years



96 Walking in Savernake



98 Wildlife Hospital

## Staff

Editor-in-Chief/Publisher: Mark Allen

Editor: Georgie Green

01722 717025

editor-wl@markallengroup.com

Editorial assistants Dominic Bernard and Helen Eggleton

Publishing Director: Jane Kennedy

01722 717018

jane.kennedy@markallengroup.com

Circulation Director: Sally Boettcher

sally.boettcher@markallengroup.com

Subscription Manager: Bethany Foy

Page Design: Mary Holmes

Advert Design: Dan Bevan

Production Manager: Carolyn Allen

Production Director: Richard Hamshere

Managing Director: Paul Geoghegan

Chief Executive Officer: Ben Allen

## Contributors

Dominic Bernard, Grant Berry, David Dawson, Nick Fogg, Simon Heptinstall, Anne Holland, Adam Jacot de Boinod, Gary Lawrence, Michael Marshman, Mary-Vere Parr, Tony Pratt, Ashley Truluck, Morag Walker

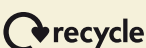
## MA Music Leisure & Travel

Part of

Mark Allen

www.markallengroup.com

Wiltshire Life is published by MA Music Leisure & Travel Ltd, Unit A Buildings 1-5, Dinton Business Park, Catherine Ford Rd, Dinton, Salisbury, Wiltshire SP3 5HZ  
www.wiltshirelife.co.uk



When you have finished with this magazine please recycle it.

ISSN: 1358-0582  
Printed by:  
Pensord Press Ltd,  
Blackwood, NP12 2YA

## FEATURES

### Stonehenge

We revisit the ongoing debate, is there still life at the end of the tunnel?

### My Wiltshire: Ping Coombes

The *Masterchef* champion shares her love for the county

### In conversation with Jennie Shaw

Mary-Vere Parr talks to the Bobby Van Trust charity fundraiser

### Swindon Choral Society

Singing the praises of the choir's retiring conductor

### The Early Early Christmas Fair

The annual festive event returns to Tidworth this autumn

### Art: Francesca Lévey

We discover more about one of Britain's leading armory conservationists

### Fermoie

Anne Holland discovers the creative world of fabric designers and makers

### Issues that matter

Gary Lawrence meets the SANDS football team, united by their grief

### Picture perfect

Simon Heptinstall reviews Wiltshire's top TV and film appearances

### Marlborough cinema

Nick Fogg explores the past and future of the new Parade picture house

### Celebrate Voice

The festival bringing music back to the heart of Salisbury

### 75 Years of Wiltshire Life

Revisiting our original issue  
Living in the county's towns and villages in 1946  
Test your post-war Wiltshire knowledge

### Julia's House

The children's hospice shares the support they offer families

### Living churchyard

Wiltshire Wildlife Trust explain how they are bringing sactum to the wilderness

### Walking for wellbeing

Venture into the autumnal bliss of Savernake Forest

### Wiltshire Wildlife Hospital

Helen Eggleton visits the charity caring for the county's creatures

### Wiltshire Life awards

6

14

16

20

22

24

28

32

36

40

44

45

92

94

96

98

104

## REGULARS

Moonraker	4
Wiltshire Scene	8
Around the County	10
Food and drink	106
The Allotment Year	112
Antiques	114

## SUBSCRIPTIONS

### UK Personal rates (print)

Quarterly Direct Debit	£14
Annual Direct Debit	£55
Annual Credit Card	£58
2yr Annual Credit Card	£99
3yr Annual Credit Card	£139

Subscribe online:  
www.magsubscriptions.com  
Subscribe by phone:  
+44 (0) 1722 716997

© MA Music Leisure & Travel Ltd, 2021. All rights reserved. No part of *Wiltshire Life* may be reproduced, stored in a retrieval system, or transmitted in any form or by any means electronic, mechanical, photocopying, recording, or otherwise without prior written permission of the Publishing Director.

The views expressed do not necessarily represent those of the editor or *Wiltshire Life*. Advertisements in the journal do not imply endorsement of the products or services advertised.

Please read our privacy policy, by visiting <http://privacypolicy.markallengroup.com>. This will explain how we process, use & safeguard your data

Cover: Our county in pictures  
Images: Visit Wiltshire